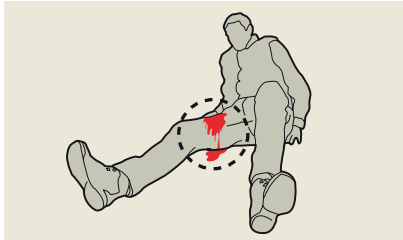


HOW TO CONTROL MODERATE TO SEVERE BLEEDING WITH CELOX[™] RAPID

Uncontrolled hemorrhage is responsible for over 35% of pre-hospital deaths¹



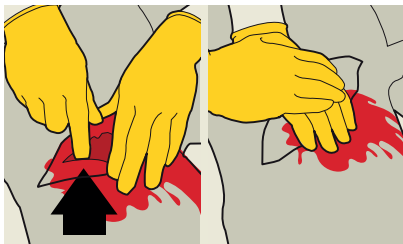
1. Identify massive hemorrhage



2. Gain control of the bleeding



3. Expose the wound - cut or tear the clothing covering the wound



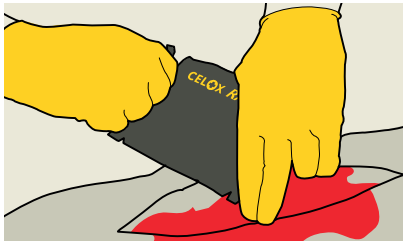
4. Identify the point of bleeding and apply direct pressure



5. Swab excess blood



6a. Pack onto source of bleeding - it has four tear notches, one at each corner



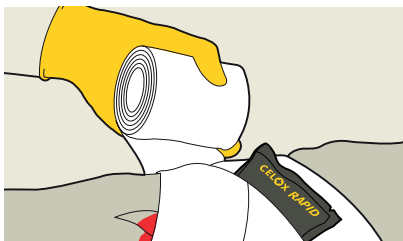
6b. Pack onto source of bleeding - open pack, take one end of gauze while still applying pressure



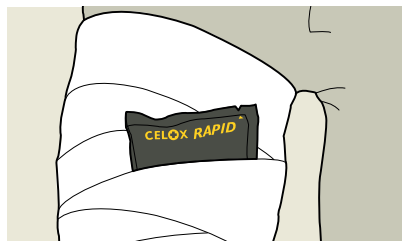
6c. Pack onto source of bleeding - tightly pack the unfolding Celox Rapid directly to the source of bleeding, feeding in the Celox Rapid until the wound is filled above skin level. Excess gauze can be cut or torn



7. Apply firm pressure for 60 seconds or until bleeding stops²



8. Secure with a dressing to maintain pressure and discard any remaining Celox Rapid



9. Transfer the casualty to the next stage of care

THINK ABOUT MASSIVE HEMORRHAGE

- M** = Massive Hemorrhage
- A** = Airway
- R** = Respiration
- C** = Circulation
- H** = Head & Hypothermia

For full details, warnings and removal instructions refer to manufacturer's instructions for use.

1. Kauvar, D.S., Lefering, R., and Wade, C.E. (2006) Impact of hemorrhage on trauma outcome: an overview of epidemiology, clinical presentations, and therapeutic considerations. *J Trauma* 60, S3-11.

2. Celox Rapid is indicated to stop life threatening bleeding with a compression time of 60 seconds or until bleeding stops.

Hoggarth A, et al. Testing a new gauze hemostat with reduced treatment time. Poster presentation at ATACCC, Ft Lauderdale, August 2011.

Copyright © 2021 Medtrade Products Ltd. CELOX[™] is a trademark of Medtrade Products Ltd. All rights reserved.